



# CYBERSECURITY SERVICES

COMPANY PROFILE

---



# TABLE OF CONTENT



**ABOUT US** 01

---

**OUR SERVICES** 02

---

**OUR CONTACT** 03





# ABOUT US



# ABOUT US

## VISION

PROVIDE HIGH-QUALITY AND WORLD CLASS COMPLETE AND COMPREHENSIVE CYBERSECURITY SERVICES AND SOLUTIONS FOR THE KSA PUBLIC AND PRIVATE SECTORS AND SUPPORT KSA VISION THROUGHOUT THE AGES

## MISSION

ENABLE OUR CLIENTS TO HAVE AN ELEVATED CYBERSECURITY INFRASTRUCTURE AND KEEP OUR NATIONAL CYBERSPACE SAFE AND SECURE TO REINFORCE OUR NATIONAL SECURITY, DRIVE A DIGITAL ECONOMY, AND DEFEND OUR DIGITAL WAY OF LIFE.





# OUR SERVICES



# INFORMATION SECURITY CONSULTATION



**Development of  
ISMS**



**Risk Assessment  
and Management**



**VAPT**



**Policies &  
Procedures**



**Compliance  
Support**

# Information Security Consultation

## Development of ISMS

**Information Security Management System (ISMS) is a service which Elevate can develop the ISMS framework that is aligned with Information Security international standards such as ISO 27001 as well as any relevant regulations such as but not limited to Saudi NCA ECC and CSCC**

**The ISMS to covers the Plan, Do, Check, ACT (PDCA) of ISO 27001.**

**The ISMS will include all the required cybersecurity polices and procedures, methodologies, supporting manuals and plans documents to establish, implement, and maintain proper cybersecurity function.**





## Information Security Consultation

### Risk Assessment and Management

Risk Management is a core and key for any proper cybersecurity implementation, it is required in all relevant standards and regulations.

Elevate cybersecurity risk management services includes but not limited to the following:

- Information and IT Cybersecurity Risk Assessment
- Assets Identification & Asset Impact Analysis
- Identification of Cyber Threats
- Identification of Vulnerabilities & Security Gaps
- Identification of Consequences
- Risk Analysis by analyzing the Likelihood and Impact levels
- Risk Evaluation

Information/IT Cybersecurity Risk Treatment Plans/Roadmaps





# Information Security Consultation

## Vulnerability Assessments & Penetration Testing

### **Vulnerability Assessment**

The objective of the vulnerability assessment is to identify all relevant vulnerabilities that may be used by hacker to attack your systems and infrastructure, and to support our client with recommendations on mitigating the identified vulnerabilities.

### **Web App Penetration Testing**

Web Application Penetration Testing service provides clients with cybersecurity issues and the cybersecurity posture of their web applications and websites.

### **Source Code Review**

It is essential to ensure proper secure software development as one of the key requirements of several regulations, so this service support with reviewing software applications source code to ensure following the best security practices of writing the code.

### **Red Teaming**

Red Team Operations service allows the client to assess its withstand and ability to detect and respond to cyber-attacks. The service may measure the effectiveness of the incident response team as well.

### **Phishing Campaigns**

This service will support identification of the level of cybersecurity awareness of the organization employees. Humans are the weakest point of cybersecurity chain, so it is important to measure this element.

## Information Security Consultation

### Development of Information Security Polices & Procedures

Cybersecurity Policies and Procedures are essential elements in the ICS/OT Cybersecurity Program or Framework

Cybersecurity Policies are like the internal regulations or laws of the organization, where these policies must be followed and complied with, and in case of policy violation, then there might be sort of consequence which may reach to termination of employment or even possible legal consequences.

Elevate have the experience and skills to develop polices as well as procedures such as but not limited to:

- Global CSMS Policy
- Removable Media Access Policy
- Access Control Policy
- Vulnerability Management Policy
- Patch Management Policy
- Data Classification Policy

**POLICIES  
AND  
PROCEDURES**



## Information Security Consultation

### Compliance Support

Elevate will provide compliance support services to clients that require to comply with international standards such as ISO 27001, PCI DSS, and/or local regulations such as NCA ECC and CSCC, we do gap analysis against the standards and regulations requirements and controls, and we can the necessary actions to support our clients comply with all the requirements through our several services including but not limited to; development of the cybersecurity polices and procedures, development of and delivery of Cybersecurity Awareness and Training programs, design and implementation of cybersecurity solutions such as Central Logging/SIEM solutions, Network Security, and CSOC operations



# OT/ICS SECURITY CONSULTATION



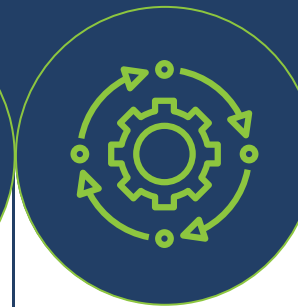
**Development of  
CSMS**



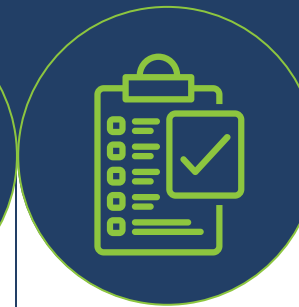
**Risk Assessment  
and Management**



**OT VAPT**



**OT Security  
Policies &  
Procedures**



**Compliance  
Support**

## OT/ICS Security Consultation



### Development of CSMS

Cyber Security Management System (CSMS) is a service which Elevate can develop the CSMS framework that is aligned with OT/ICS cybersecurity international standards such as ISA/IEC 62443 and local regulations such as OTCC.

The CSMS to cover the Assess, Implement, and Maintain phases as per the ISA/IEC 62443 and the Plan, Do, Check, ACT (PDCA) of ISO 27001.

The CSMS will include all the required cybersecurity policies and procedures, methodologies, supporting manuals and plans documents to establish, implement, and maintain proper cybersecurity function

## OT/ICS Security Consultation

### Risk Assessment and Management

Risk Management is a core and key for any proper cybersecurity implementation, it is required in all relevant standards and regulations.

Elevate cybersecurity risk management services includes but not limited to the following:

#### **ICS/OT Cybersecurity Risk Assessment**

- Assets Identification & Asset Impact Analysis
- Identification of Zones and Conduits
- Identification of Target Security Levels
- Vulnerability & Gap Assessment
- Threat Assessment
- Threat Scenarios Identification
- Risk Analysis by analyzing the Likelihood and Impact levels

#### **ICS/OT Cybersecurity Risk Treatment Plans/Roadmaps**

#### **SecuriLERT Services (Vulnerability and Risk Alerting Service)**



# OT/ICS Security Consultation



## OT VAPT

Conducting technical vulnerability assessment and penetration testing in ICS/OT has different approaches than in IT environment. There might be several limitations and constraints as well conducting the VAPT using traditional tools.

ICS/OT VAPT approaches depends on many factors such as which phase the system under assessment is at, is it project phase or is it operation and maintenance phase? Does the system under VAPT is in lab & testing environment, or is it in operation and production...etc.

There were many incidents occurred within the critical infrastructure ICS/OT environments because of involving non-specialized companies or teams whom uses regular IT VAPT tools and which caused several systems outages.

Elevate has the required ICS/OT VAPT knowledge and experience which will achieve client objectives and at the same time without causing any systems or operational disruption.





## OT/ICS Security Consultation

### OT Security Polices & Procedures

Cybersecurity Policies and Procedures are essential elements in the ICS/OT Cybersecurity Program or Framework

Cybersecurity Policies are like the internal regulations or laws of the organization, where these policies must be followed and complied with, and in case of policy violation, then there might be sort of consequence which may reach to termination of employment or even possible legal consequences.

Elevate have the experience and skills to develop polices as well as procedures such as but not limited to:

- Global CSMS Policy
- Removable Media Access Policy
- Access Control Policy
- Vulnerability Management Policy
- Patch Management Policy
- Data Classification Policy





## OT/ICS Security Consultation

### Compliance Support

Elevate will provide compliance support services to clients that require to comply with international standards such as ISA/IEC 62443 and/or local regulations such as NCA OTCC, we do gap analysis against the standards and regulations requirements and controls, and we can the necessary actions to support our clients comply with all the requirements through our several services including but not limited to; development of the cybersecurity polices and procedures, development of and delivery of ICS/OT Cybersecurity Awareness and Training programs, design and implementation of cybersecurity solutions such as ICS/OT IDS solutions, Central Logging/SIEM solutions, and CSOC operations





# PRIVACY COMPLIANCE CONSULTATION



**Compliance support  
with privacy  
standards and  
regulations**

**Compliance with Data Protection Laws: We support our clients to the applicable data protection laws and regulations in Saudi Arabia, including the Personal Data Protection Law (PDPL) governed by the Saudi Data and Artificial Intelligence Authority (SDAIA).**

# IT Security Professional Services



**Network Security**



**Host Security**



**CSOC**



## IT Security Professional Services



### Firewall (NGFW) Protection

**Protecting your network from advanced threats is our top priority at Your Company. Our Next-Generation Firewall (NGFW) solutions offer comprehensive security measures to safeguard your network infrastructure. With advanced threat detection capabilities, deep packet inspection, and integrated intrusion prevention system (IPS), our NGFW ensures real-time threat prevention and blocks unauthorized access attempts. Trust our NGFW solutions to provide robust network security, allowing you to focus on your business without worrying about potential security breaches.**



## IT Security Professional Services

### Access Management



The graphic features a central circular area with the text "IDENTITY ACCESS MANAGEMENT" in bold, blue, uppercase letters. A hand is shown pointing at this central area. The background is a dark teal color with white dashed lines forming a grid and several white arrows pointing towards the center. In the bottom left corner, there is a small white icon of a person.

### IDENTITY ACCESS MANAGEMENT

#### **Privileged Access Management (PAM) Solution**

**we recognize the criticality of securing privileged access within your organization. Our Privileged Access Management (PAM) solution offers comprehensive control and monitoring of privileged accounts and user activities. With our PAM solution, you can enforce granular access controls, streamline privileged session management, and track and audit privileged activities. We help you mitigate the risks associated with privileged access misuse or unauthorized actions, ensuring the confidentiality and integrity of your sensitive data. Trust our PAM solution to strengthen your security posture and maintain control over privileged accounts within your organization.**

## IT Security Professional Services



### Industrial IDS

**Industrial IDS solutions are one of the most common to deploy in the ICS/OT Network in order to bring visibility across the different network zones and critical devices, it can monitor PLCs/RTUs network traffic as well as servers and HMI's network traffic in order to detect anomalies and threat events. Industrial IDS solutions understand the typical TCP/IP protocols as well as ICS protocols such as Modbus TCP, IEC 104... etc.**

**Elevate can do the proper design and implementation for the Industrial IDS solutions.**



## IT Security Professional Services



### Email Security

**we prioritize the security of your email communication. Our advanced email security solutions protect your inbox from spam, phishing attempts, and malicious attachments. We scan emails for malware and viruses, utilize encryption to safeguard your messages, and employ techniques to detect and prevent phishing attacks. Our commitment to compliance ensures that your email communication adheres to privacy laws and regulations. Partner with us to secure your email communication and protect your sensitive information.**



## OT Security Professional Services

### Hardening

Hardening helps in reducing the attack surface for the systems, hardening of the network and of the other type of devices such as servers, workstations, HMIs, controllers...etc. is essential for the IT systems and that can be achieved by several activities such as but not limited to; disabling unused ethernet switch ports, disabling unused protocols and services from the different systems devices, removing unnecessary user accounts...etc. Elevate can do the proper planning and implementation the required systems security hardening.





## IT Security Professional Services



### EDR/XDR

**Protect your endpoints with our advanced Endpoint Detection and Response (EDR) solutions. Our real-time monitoring and proactive threat hunting capabilities enable swift detection and response to potential security threats. We utilize behavioral analytics, malware detection, and patch management to ensure comprehensive endpoint protection. With forensic investigation and proactive threat intelligence, we help you stay ahead of evolving threats. Partner with us for effective endpoint security and peace of mind**



## IT Security Professional Services

### DLP

**we understand the significance of preventing data loss and ensuring the confidentiality of your sensitive information. Our DLP solutions proactively monitor and protect your data across your network, both at rest and in transit. By employing advanced technologies, we detect and prevent unauthorized disclosure or accidental leakage of critical data. Our DLP controls help you maintain compliance with data protection regulations and mitigate the risks associated with data breaches. Trust us to safeguard your valuable data with our robust DLP protection measures.**





## IT Security Professional Services



### Central Logging/SIEM

Central Log Management is requirement in almost every cybersecurity standard or regulations. The main objectives of these solutions is to collect the logs including the cybersecurity logs from all systems assets, and to store them for certain period of time. That help in building and operating cybersecurity operation centers where client cybersecurity team can monitor the cybersecurity 24/7, and also this will help in cybersecurity incidents early detection, and for cybersecurity incidents analysis and forensics.

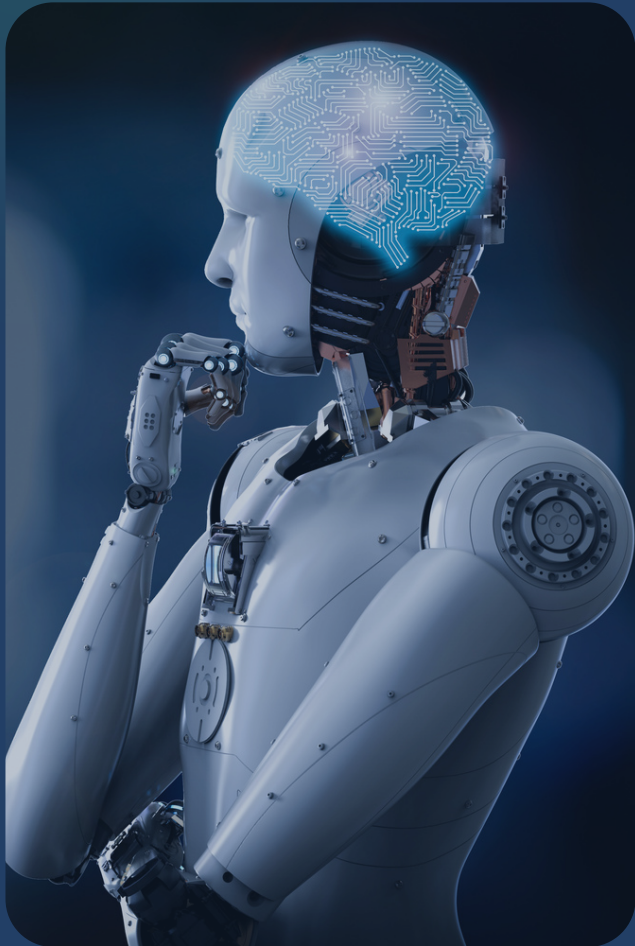
Elevate can do the proper design and implementation for central log management/SIEM solutions

## IT Security Professional Services

### Cyber Threat Intelligence

Elevate provides Cyber Threat Intelligence services covering the main three intelligence types:

- Strategic threat intelligence
- Operational threat intelligence
- Tactical threat intelligence



# OT Security Professional Services



**Network Security**



**Host Security**



**CSOC**

## OT Security Professional Services

### Access Management

Identity and Access Management (IAM) and Privilege Access Management (PAM) solutions are becoming more and more requested within the ICS/OT systems security requirements, such solutions support better control on the access to the ICS/OT assets Elevate can do the proper design and implementation for the IAM/PAM solutions.



## OT Security Professional Services

### Data Diodes

Data Diodes are very powerful solutions specially in the age of digital transformation when ICS/OT network is required to connect with the IT or other external networks. These solutions allow network traffic to move only in one direction and achieve the highest security level when connecting with external networks. Another use case is when there are standalone isolated systems where you need to connect in order to get security logs from while keeping almost the same level of isolation. Elevate can do the proper design and implementation for the Data Diodes solutions.





## OT Security Professional Services

### EDR/XDR

**Endpoint Security is essential element in the ICS/OT cybersecurity management systems, EDR/XDR solutions is supporting the security of the endpoint devices and more feature than existed in the traditional endpoint security solution, as such solution support detection of wider range of threats and also support wider options for incident response.**

**Elevate can do the proper design and implementation for endpoint security traditional antimalware solutions as well as EDR/XDR solutions**





## OT Security Professional Services



### Central Logging/SIEM

Central Log Management is requirement in almost every cybersecurity standard or regulations. The main objectives of these solutions is to collect the logs including the cybersecurity logs from all systems assets, and to store them for certain period of time. That help in building and operating cybersecurity operation centers where client cybersecurity team can monitor the cybersecurity 24/7, and also this will help in cybersecurity incidents early detection, and for cybersecurity incidents analysis and forensics.

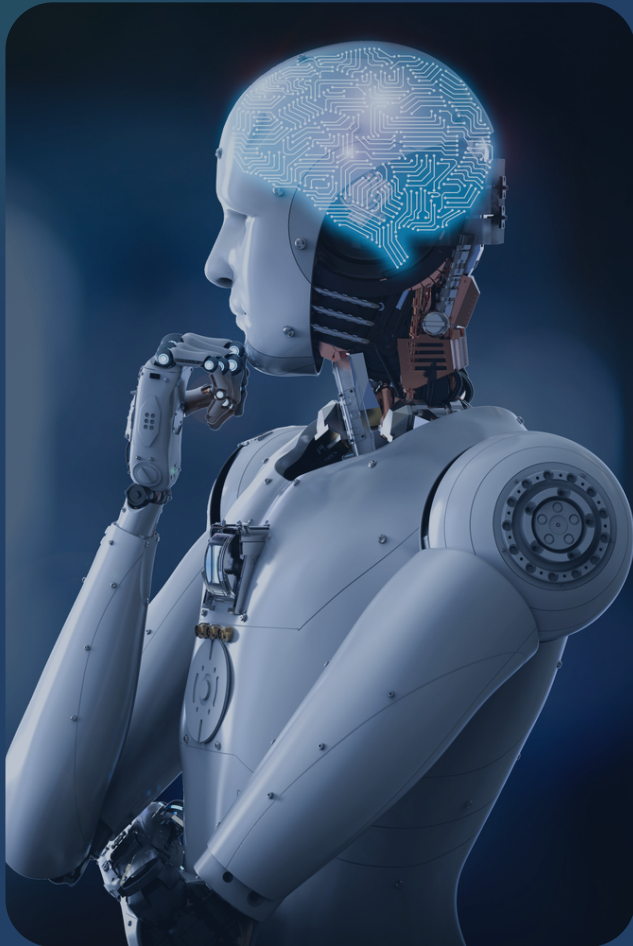
Elevate can do the proper design and implementation for central log management/SIEM solutions

## OT Security Professional Services

### Cyber Threat Intelligence

Elevate provides Cyber Threat Intelligence services covering the main three intelligence types:

- Strategic threat intelligence
- Operational threat intelligence
- Tactical threat intelligence



# Outsourcing



**CSOC operations**



**Incident Response**



**Cyber GRC**



**SecuriLERT  
Vulnerability &  
Risk Alerting**

## Outsourcing

### CSOC Operations

**Elevate has the capabilities to operate client Cybersecurity Operation Center (CSOC) either by providing the CSOC resources to work onsite at the client premises or by doing this remotely from Elevate premises. The functions and tasks of the CSOC team and relevant roles and responsibilities are to be defined with the client to ensure client are meeting their objectives of the CSOC operations**



## Outsourcing

### Cybersecurity Incident Response

**Elevate provide Cybersecurity Incident Response services to support client in responding to cyber attacks in order to support in reducing downtime of the systems and recover from the incidents ASAP, and providing the necessary lesson learnt to mitigate from having similar incidents from reoccurring again**



## Outsourcing

### Cyber GRC

**Elevate has the capabilities to operate client Cybersecurity GRC function either by providing the GRC consultants to work onsite at the client premises or by doing this remotely from Elevate premises. The functions and tasks of the GRC consultants and relevant roles and responsibilities are to be defined with the client to ensure client are meeting their objectives of the Cybersecurity GRC function.**



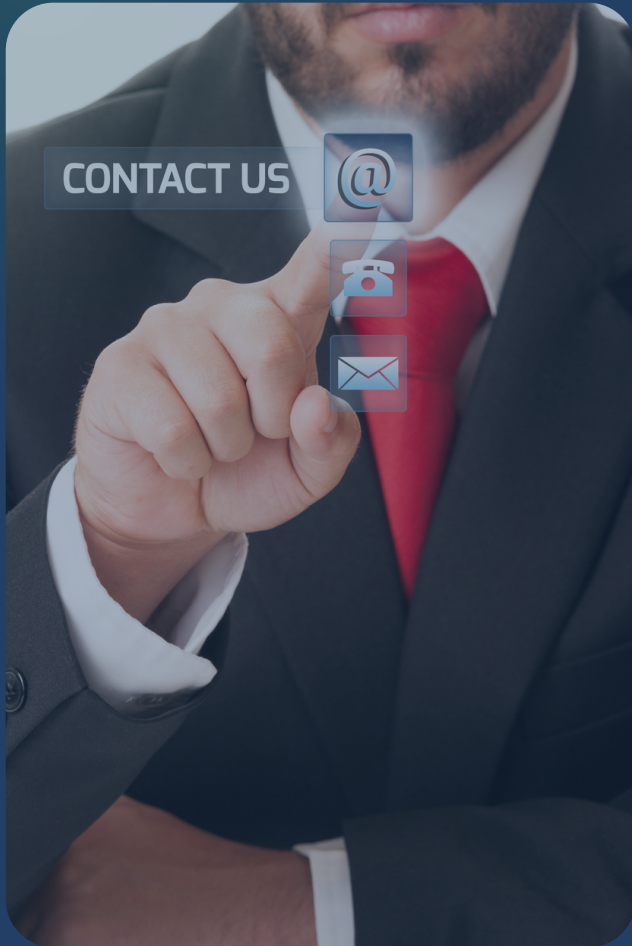
## Outsourcing

### SecuriLERT

**The objective of this service is to respond to customers requirements related to technical vulnerability management in ICS/OT and IT environment which it might be difficult to run automated tools to support this function and where the client security resources doesn't have the capacity to maintain this critical requirement. Elevate partners with SecuriCIP to respond to such requirements, and which will ensure not only vulnerability identification and alerting, but also identification of relevant risks specific to the organization and inline with organization specific risk matrix**







# OUR CONTACTS

# OUR CONTACTS



**+966 50 748 9940**



**Olaya Street Riyadh, 12221, Saudi Arabia**



**info@elevate-sa.com**



**Elevate-sa.com**